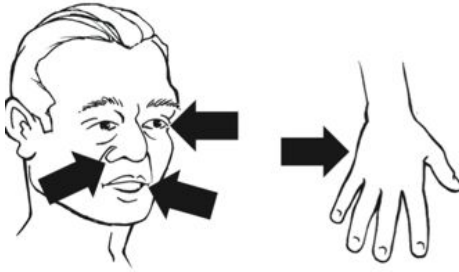


# Pesticide Safety

Pesticides can poison people. They can enter the body through the eyes, nose, mouth or skin.



Never smoke, drink or eat while working with pesticides. After finishing work with pesticides, wash hands thoroughly before going to the bathroom, eating or drinking.



Always read the pesticide label and follow all label instructions. The label is the law. Keep all pesticides in fully labeled containers. Note the signal word.



Signal words:  
Danger = high toxicity  
Warning = moderate toxicity  
Caution = low toxicity



Always use all personal protective equipment (PPE) required on the pesticide label.



Measure pesticide precisely with specially marked utensils, so that you mix only the amount required for the job.



Be aware, PPE used during pesticide application may increase heat stress.



Put all pesticides in the rear section of the truck, never in the cabin. Make sure containers are in good condition before loading and well secured in the vehicle.



Accidental spills must be cleaned up. Remember: control, contain and clean.

- Control: Wear PPE required by pesticide label, remain at site and keep people and animals away, and inform the supervisor.
- Contain: Prevent the spread and cover spill with an absorbent material such as kitty litter.
- Clean: Collect all the absorbent material and put it in a heavy-duty, leak free bag to be discarded correctly.



- Any clothing worn while working with pesticides should be washed separately from all other clothing.



### **Review of the Worker Protection Standards**

- Show workers where information about pesticide safety and emergency procedures is displayed at the workplace. This includes the location of Material Safety Data Sheets (MSDS).
- Describe the medical assistance that will be provided in case of a work-related pesticide emergency.
- Show workers decontamination sites for washing pesticide residues off hands and body.
- Describe process for enforcing compliance with restricted entry intervals.
- Describe how workers will be notified about areas where pesticide application is taking place.
- Identify the trained and equipped pesticide handlers who will be present during pesticide application
- Demonstrate and provide all PPE for handlers and workers who need to enter pesticide treated areas.
- Provide training for pesticide handlers on the safety and correct use of PPE during mixing, loading and application of all pesticides used.

