



Group 1: Species With Predacious Larvae. Species with predacious, mostly aphid-feeding larvae—Syrphinae (blue) and Pipizinae (yellow). Species whose names are shown in **bold** are considered exceptionally common.

Note. *Xanthogramma flavipes* (F) larvae are unknown but probably feed on root aphids tended by ants, and *Toxomerus politus* (I) larvae are known to feed on grass pollen (corn and sorghum).

The permalink for the complete UGA Extension publication B 1565 *Common Hoverflies of Georgia: An Introductory Guide* is extension.uga.edu/publications/detail.html?number=B1565

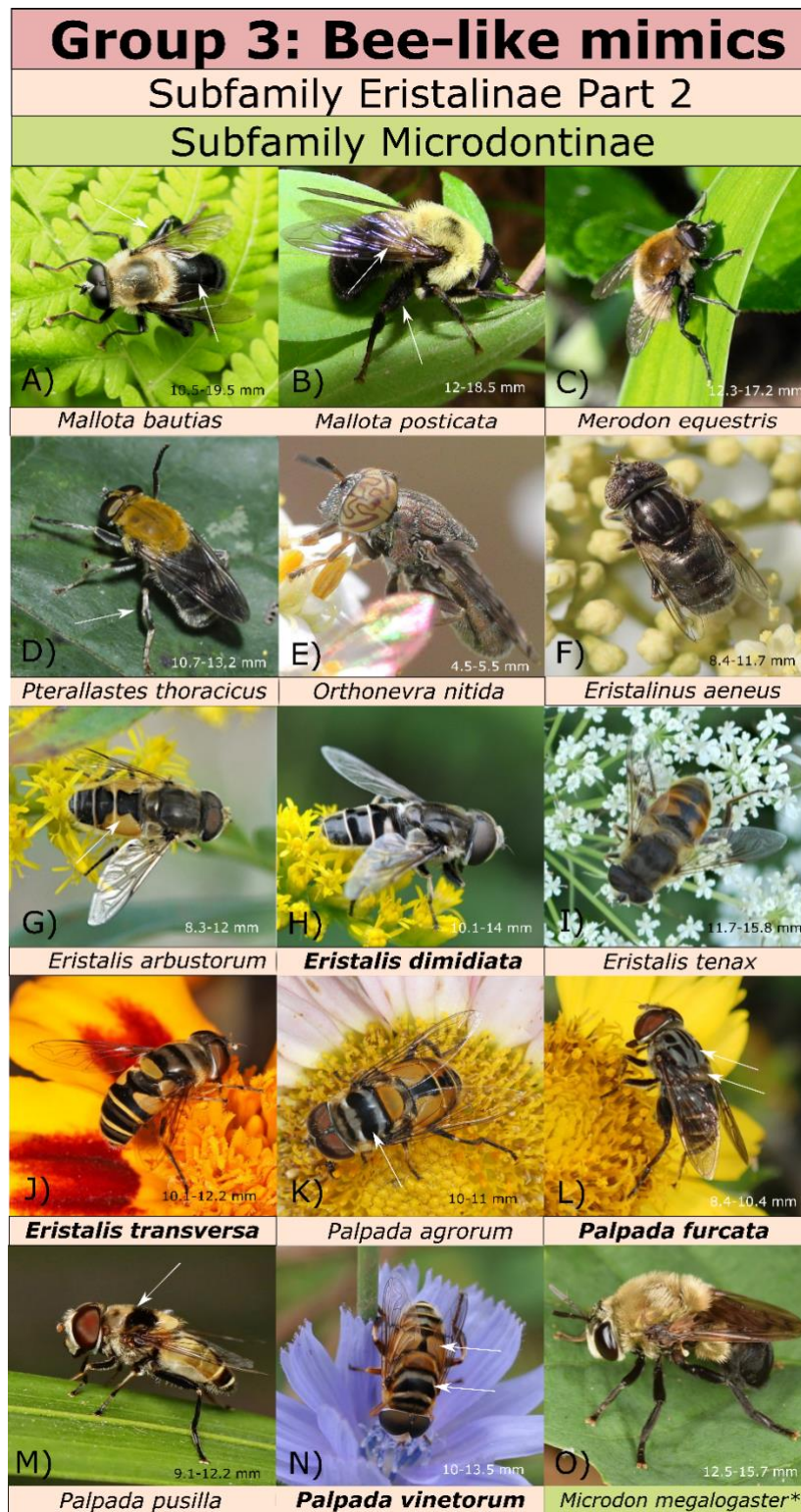
Group 2: Wasp-like mimics

Subfamily Eristalinae Part 1



Group 2: Wasp-Like Mimics. Nonpredacious hoverflies that resemble wasps—Eristalinae Part 1. Species whose names are shown in **bold** are considered exceptionally common.

The permalink for the complete UGA Extension publication B 1565 *Common Hoverflies of Georgia: An Introductory Guide* is extension.uga.edu/publications/detail.html?number=B1565



Group 3: Bee-Like Mimics. Nonpredacious hoverflies that resemble bees—Eristalinae Part 2 (pink) and Microdontinae (green). Species whose names are shown in **bold** are considered exceptionally common.

Note. *Microdon* spp. are brood parasites of ant eggs/larvae, thus technically predacious.

The permalink for the complete UGA Extension publication B 1565 *Common Hoverflies of Georgia: An Introductory Guide* is extension.uga.edu/publications/detail.html?number=B1565